



# 4255 Highway 7 TOWNSHIP OF SOUTH PERTH COUNTY OF PERTH

21.98 ACRES  
OF INDUSTRIAL  
LAND FOR  
SALE

Located on  
James Street  
and Hwy 7



- 21.98 acres in South Perth
- Industrial land which permits industrial uses , garden nurseries, greenhouses, garden display areas, automotive sales and service, recreational vehicles sales and service, farm supply outlets, etc.
- Services are available nearby from the Town of St Marys
- Zoning M-2, Bylaw #4-1999
- Agricultural Taxes \$294.44(2013)
- Sale Price \$879,000.00

**FOR MORE  
INFORMATION  
PLEASE CONTACT**

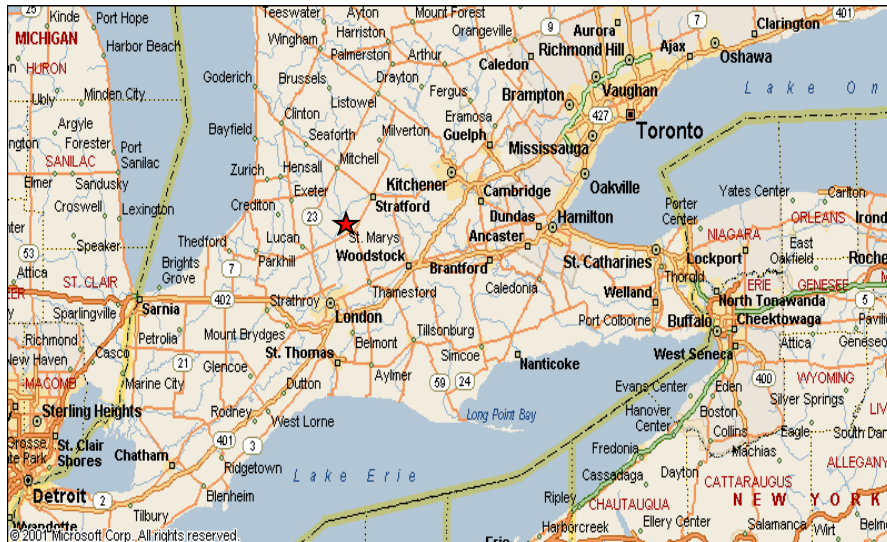
**Mel de Oliveira\*\*, CCIM**  
Vice President  
519.340.2311  
mel.deoliveira@cbre.com  
www.cbre.ca/mel.deoliveira

**CBRE**

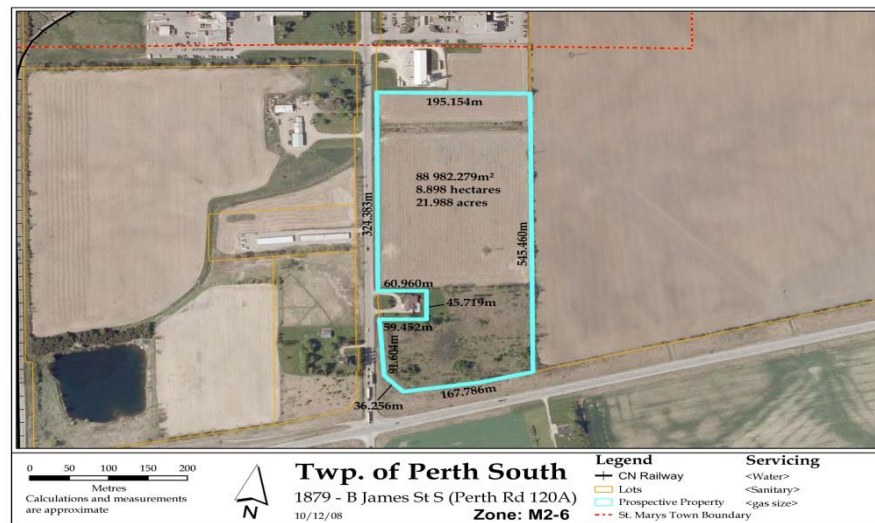


# 4255 Highway 7 TOWNSHIP OF SOUTH PERTH COUNTY OF PERTH

## LOCATION:



From St. Marys, Ontario CANADA to:	Total Est. Time
Toronto, Ontario, CANADA	2 hours
Kitchener, Ontario, CANADA	1 hour
Woodstock, Ontario, CANADA	45 minutes
London, Ontario, CANADA	45 minutes
Detroit, Michigan, U.S.A.	2 1/2 hours
Buffalo, New York, U.S.A.	3 hours



**FOR MORE  
INFORMATION  
PLEASE CONTACT**

**Mel de Oliveira\*\* , CCIM**  
 Vice President  
 519.340.2311  
 mel.deoliveira@cbre.com  
 www.cbre.ca/mel.deoliveira

CBRE Limited, Real Estate Brokerage | 101 Frederick Street | Suite 810 | Kitchener, ON N2H 6R2 www.cbre.ca | \*Sales Representative

*This disclaimer shall apply to CBRE Limited, Brokerage, and to all other divisions of the Corporation ("CBRE"). The information set out herein (the "Information") has not been verified by CBRE, and CBRE does not represent, warrant or guarantee the accuracy, correctness and completeness of the Information. CBRE does not accept or assume any responsibility or liability, direct or consequential, for the Information or the recipient's reliance upon the Information. The recipient of the Information should take such steps as the recipient may deem necessary to verify the Information prior to placing any reliance upon the Information. The Information may change and any property described in the Information may be withdrawn from the market at any time without notice or obligation to the recipient from CBRE.*

